

Product Description

Cooperate has developed an anti-static membrane contactor, which utilizes a unique PMP hollow fiber membrane.

This membrane serves as a medium to supply CO₂ into ultrapure water, ensuring rapid and controllable dissolution of CO₂. The product effectively maintains system outlet stability, and it can enhance gas utilization efficiency while reducing gas consumption.

Features and advantages

- Ultra-clean with no secondary pollution
- High efficiency in dissolving gas
- Stable resistivity of produced water
- Longer service life
- High gas utilization rate, saving gas consumption
- Small size, occupying less space while offering a large flow rate

Material

Components	Material
Shell	PPO
Membrane	PMP
Sealing ring	EPDM
Potting	Epoxy resin

Specification

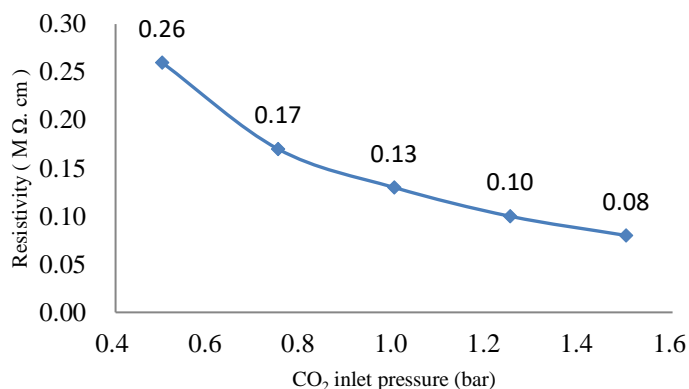
Flow rate range	50-300L/h
Membrane area	1.8m ²
Interface	Liquid inlet and outlet NPT 1/4
	Gas phase interface NPT 1/4
Maximum operating temperature	55 °C /131 °F
Maximum operating pressure	0.3MPa@55° C
Maximum vacuum pressure	-98KPa
Save method	Dry storage

PMP-MBC-2508 Anti-Static Membrane Contactor

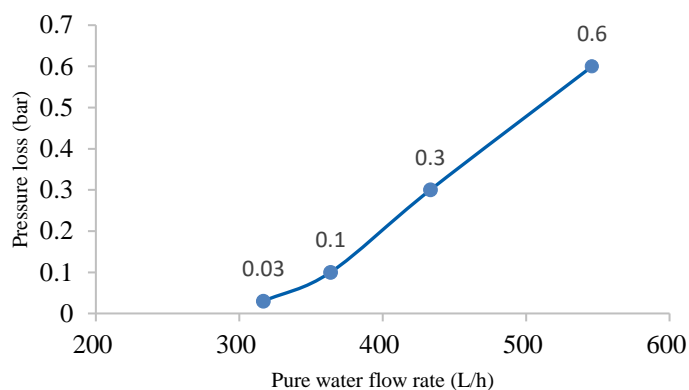


PMP hollow fiber membrane and 3D drawing

Experimental Data



Note: The test temperature is 25°C and the test liquid is 18.25·MΩ·cm ultrapure water. The water flow rate is 220L/h. The contactor's CO₂ filling efficiency data represent the average performance curve of this type of membrane contactor. Each individual membrane contactor may deviate from the average level by up to ±3%.

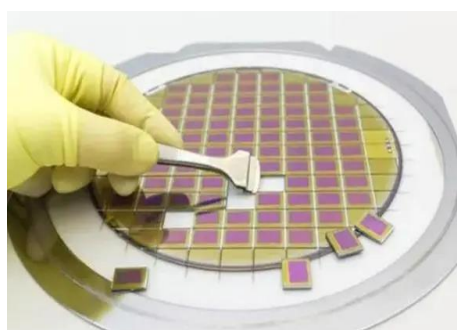


Note: In this test, the test fluid is 25°C pure water. The above pressure loss data is the average level curve of this type of membrane contactor, the individual, and The average deviation is within ±3%.

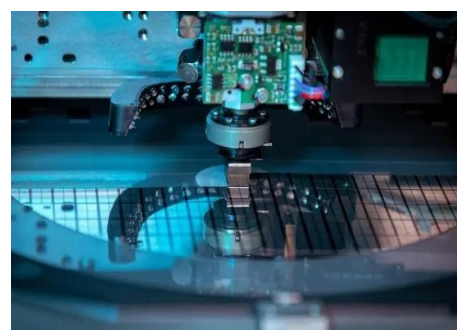
Applications



Microcircuit chip cutting and cleaning



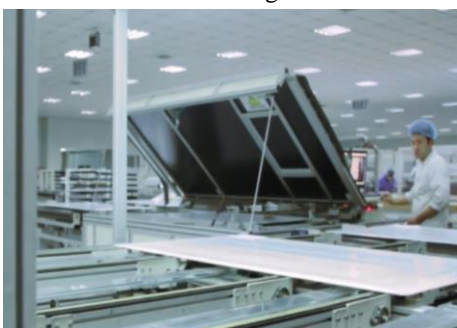
Photomask cutting and cleaning



Wafer cutting and cleaning



Semiconductor silicon wafer cutting and cleaning



Solar cell cutting and cleaning



Controlled ultrapure water resistors for special industries

Company Address: Building 17, Liandong U Valley Hefei High-tech International Enterprise Port, No. 2899 Kongquetai Road, Hefei High-tech Zone, Hefei, China

Please visit our website: www.coopmem.com